

Healthy Urban Living

In the Utrecht region, the Netherlands

Freek van Muiswinkel, PhD

Managing Director Utrecht Life Sciences

Taipei Health Forum - Building future health together, December 10 2019



- Utrecht Life Sciences
- Healthy Urban Living & the Utrecht Exposome Hub
- Public Private Partnerships and Business opportunities

Utrecht Life Sciences:

Research domains & and HUBS for specific societal challenges

Healthy Aging
Chronic Diseases

Solutions to Societal Challenges

Interdisciplinary HUB

Private Partners

One Health

Personalized
Medicine &
Health

Regenerative
Medicine

Science for Life

Public Partners

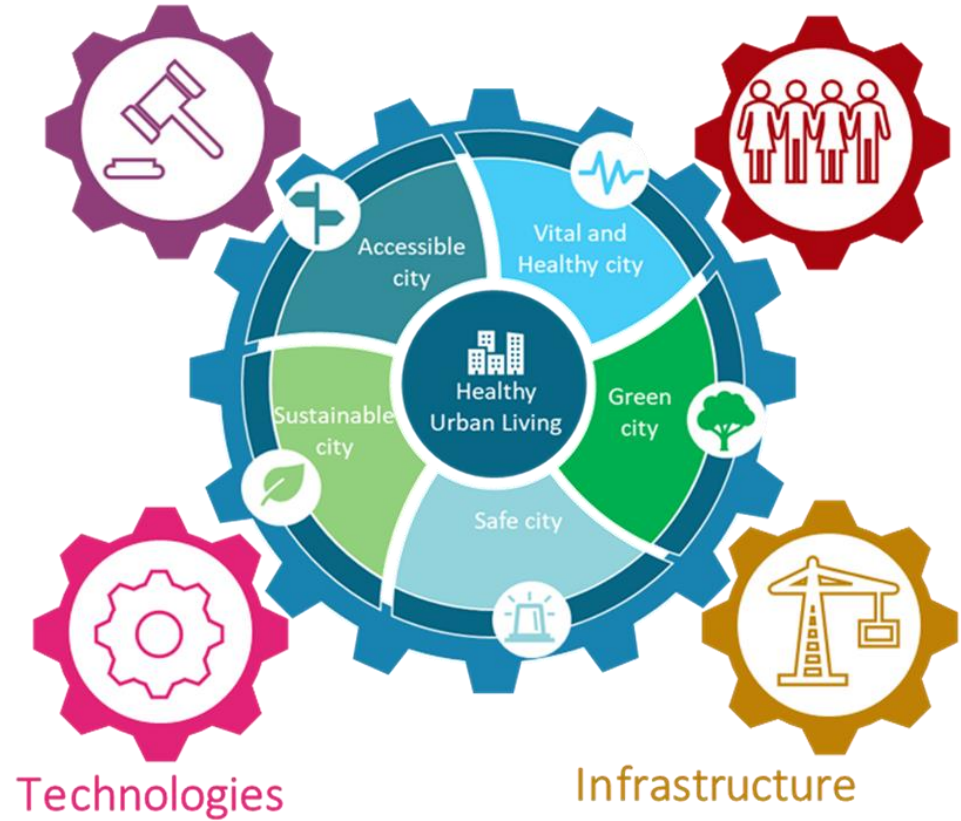


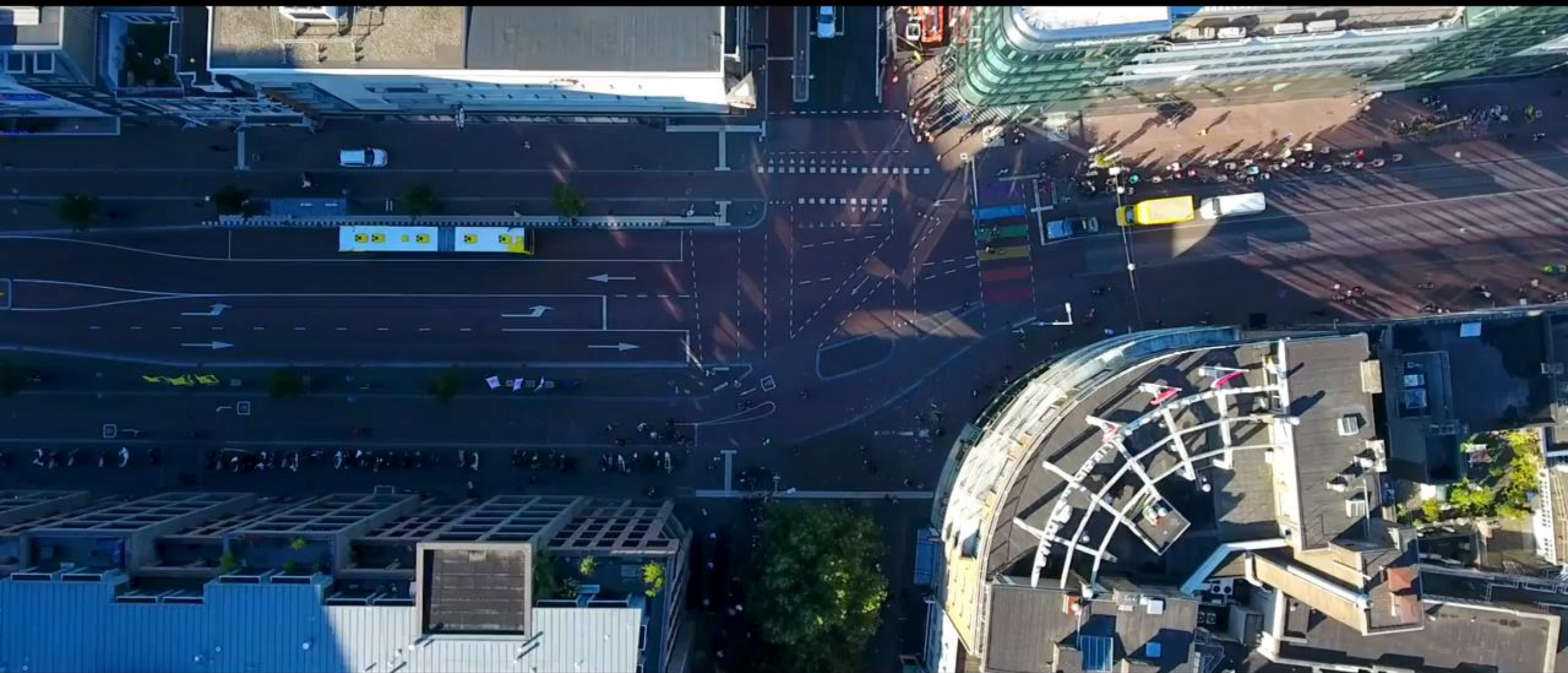
'Healthy Urban Living': A holistic view with multiple domains



Public and Private Policies

Behaviour





Urban design & Healthy Urban Living

Impact of decision making is often determined at hindsight with all due effects...

India



Utrecht EXPOSOME HUB



Exposome

In addition to our genetic nature, the environment in which we live has a major influence on our health.

Non-genetic factors, such as our physical or social environment, or our behaviour, play an important role in the development and prognoses of diseases.

The totality of environmental exposures over the life course is called 'the exposome'

The exposome includes every factor that determines sickness and health that is not part of a person's genome

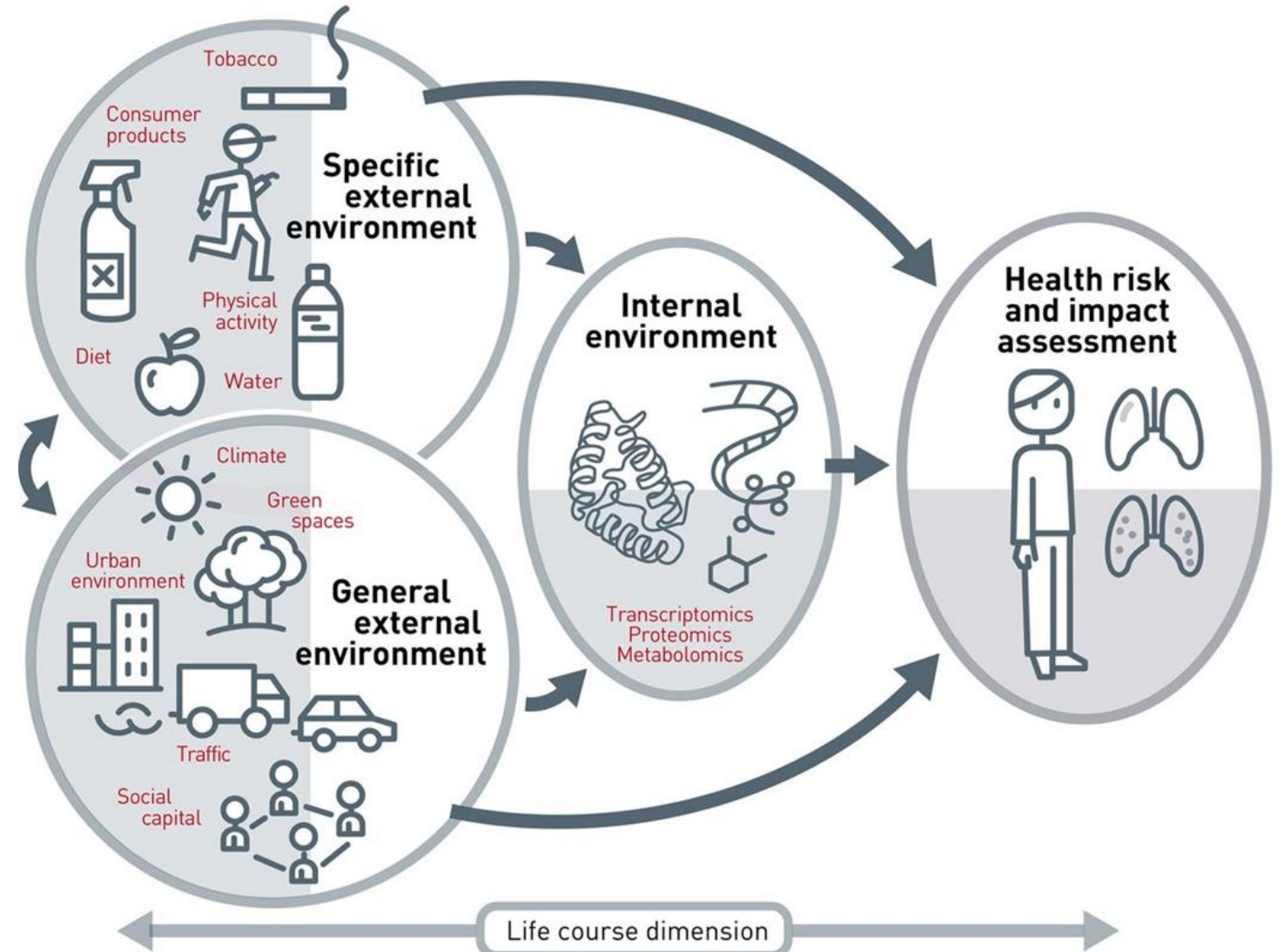
The three domains of the Exposome

General external environment

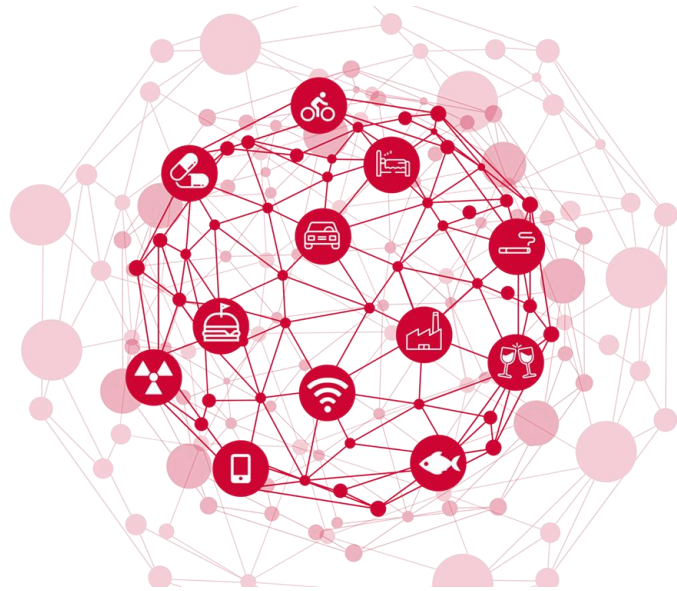
Specific external environment

Internal environment

Wild et al. (2012)

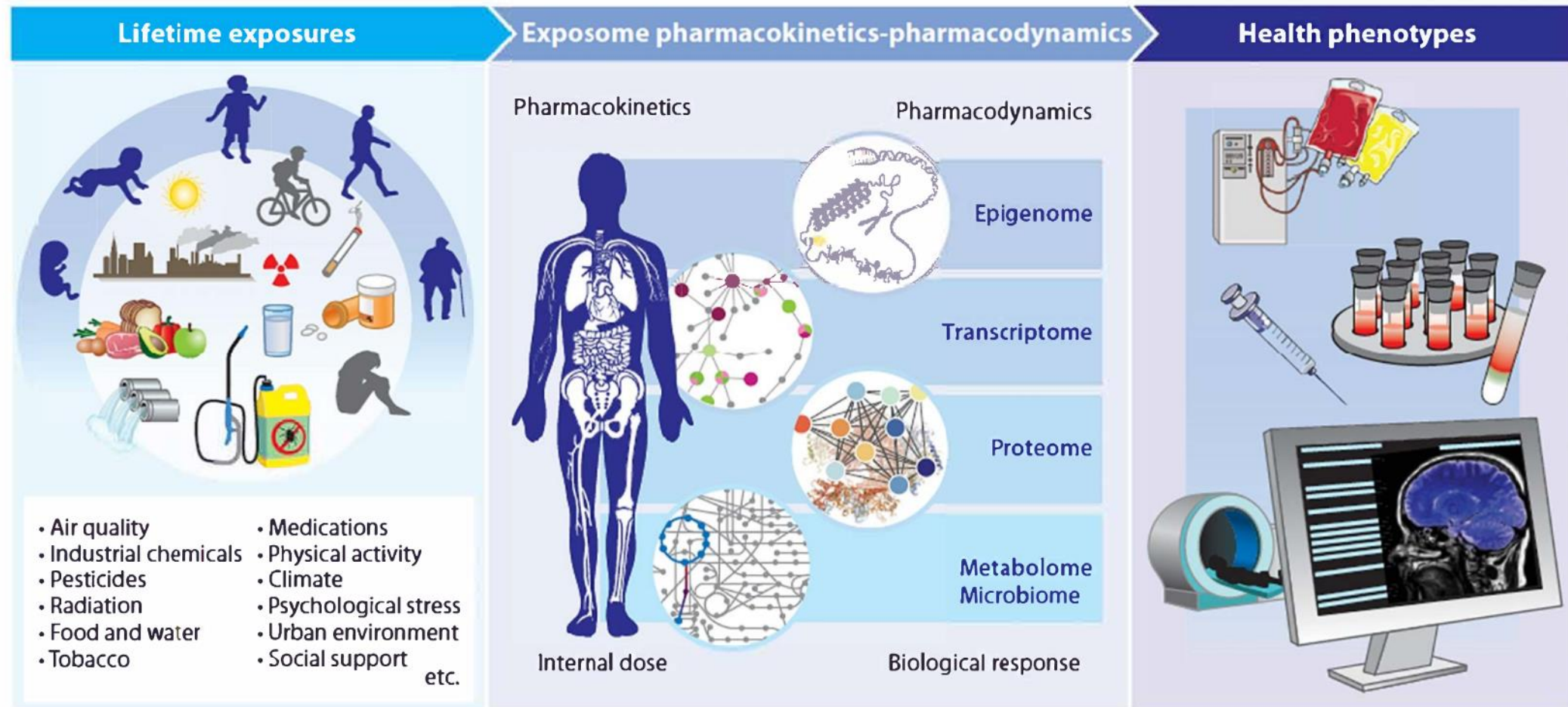


Utrecht Exposome Hub – Connecting the dots...

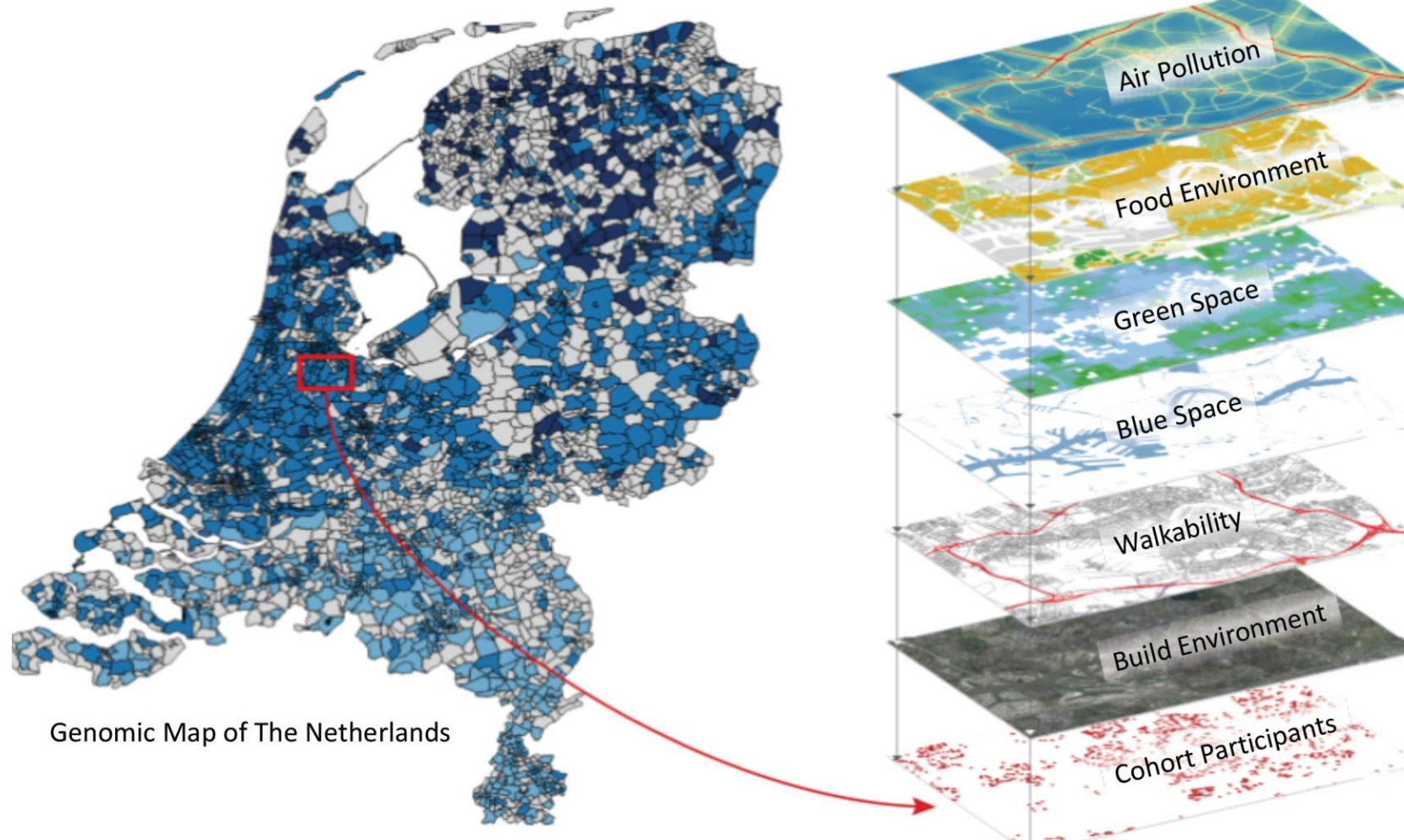


How does the totality of exposures that a person experiences combined with the associated biological response, relate to health and disease?

The Exposome: A system approach to personalised health



The Exposome: Layers of Exposome maps (data sciences)



Example of layers of Exposome maps representing the interplay between Exposome factors

Utrecht Exposome Hub – Sniffer bikes



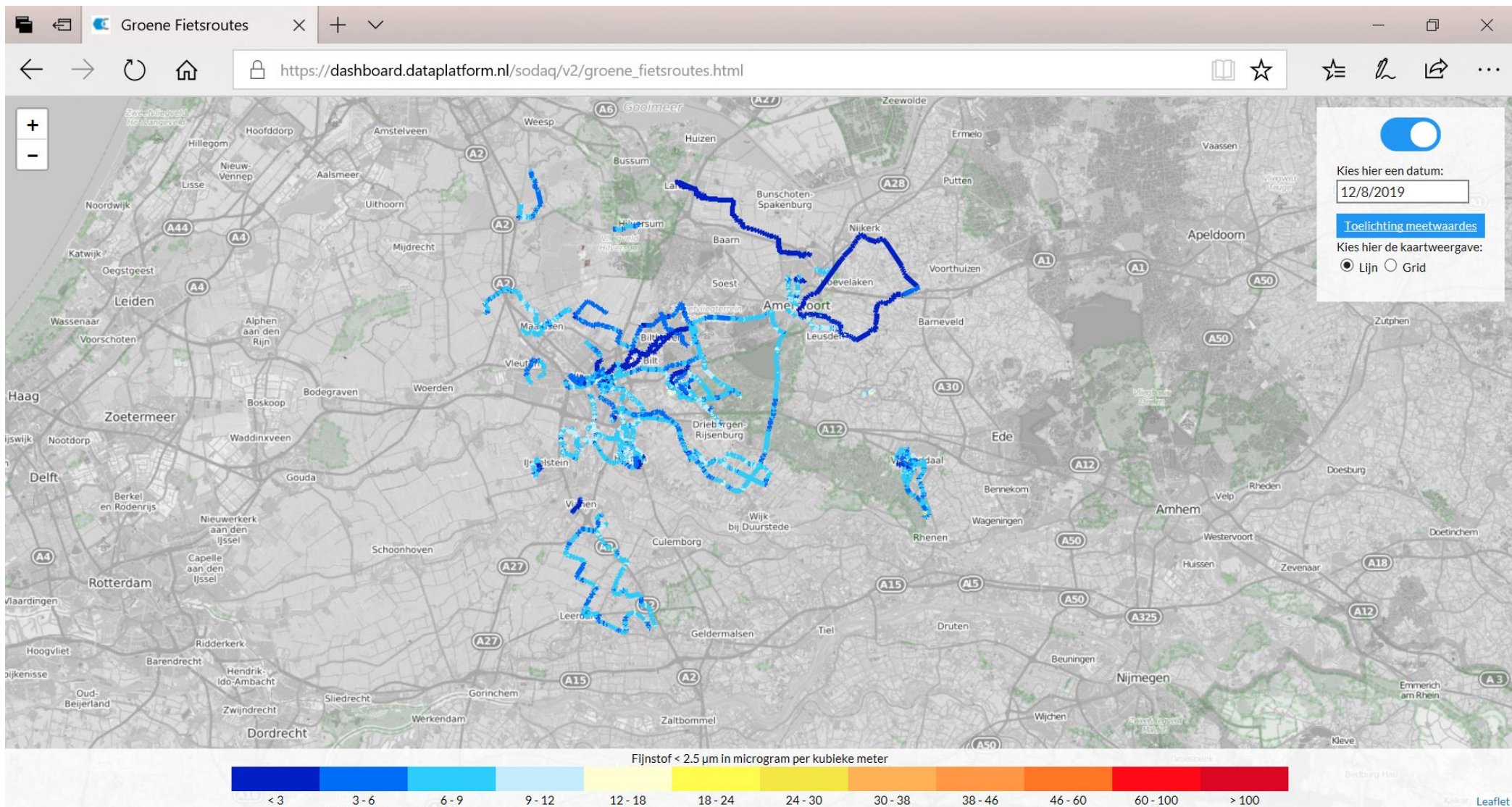
National Institute for Public Health
and the Environment
Ministry of Health, Welfare and Sport



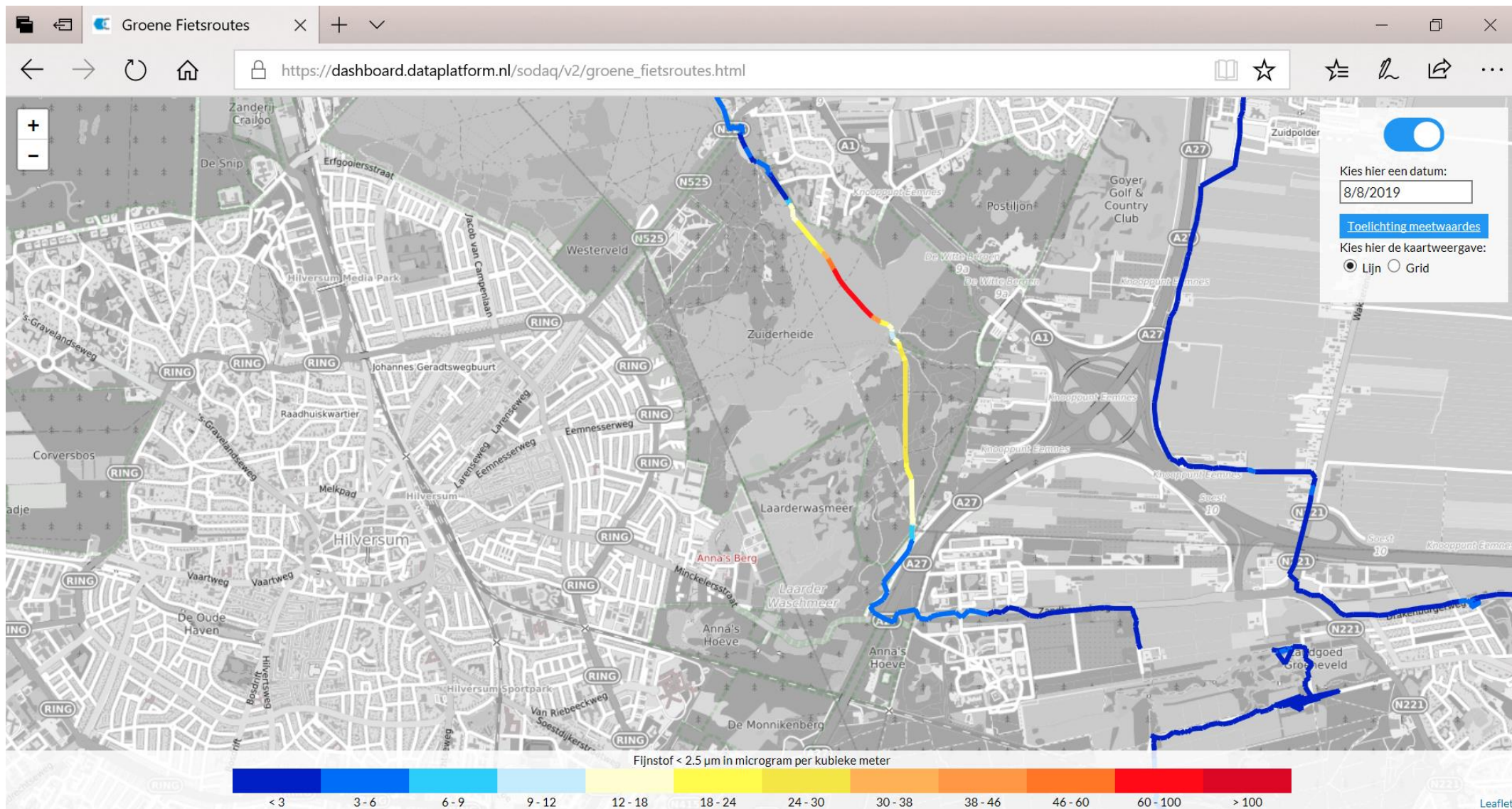
SNUFFELFIETS



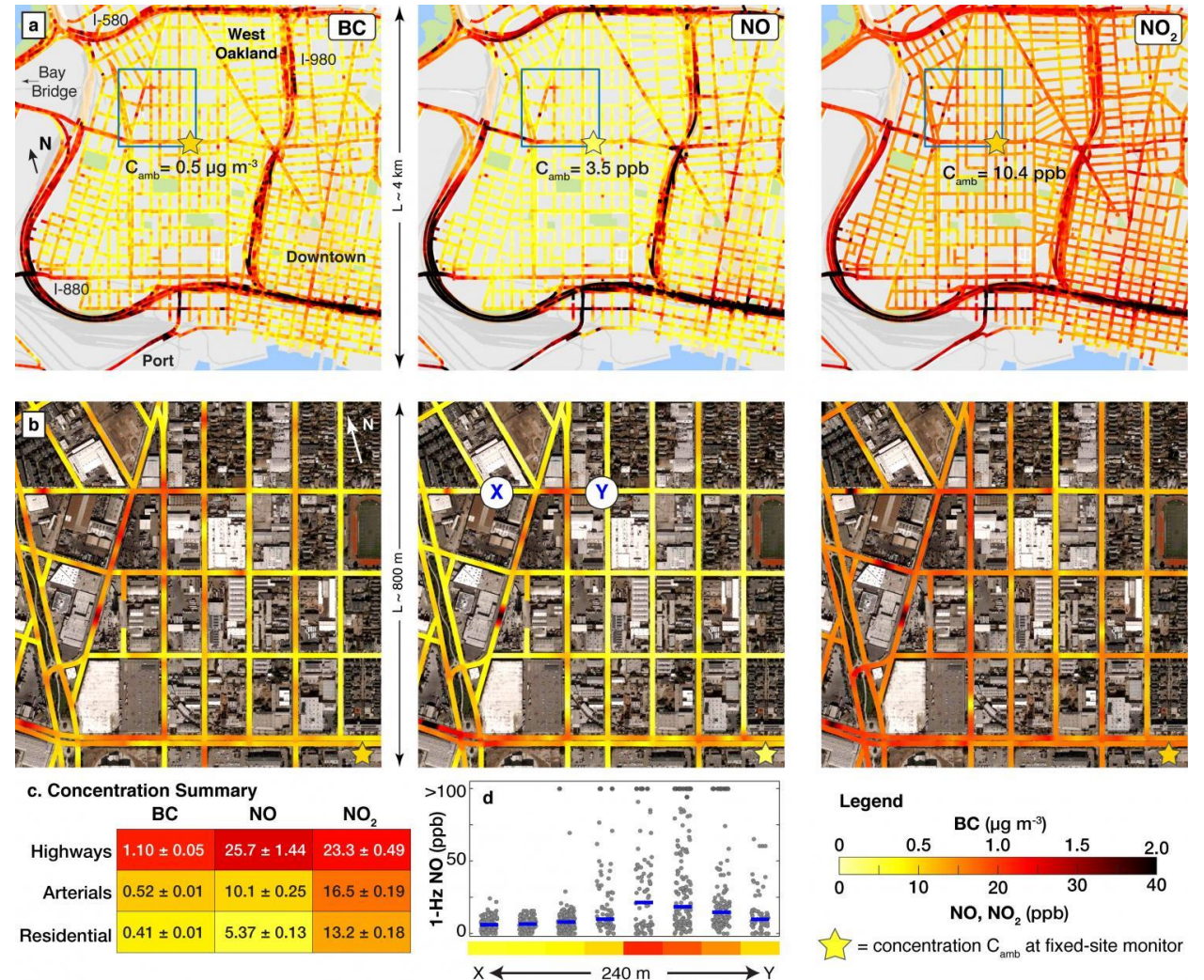
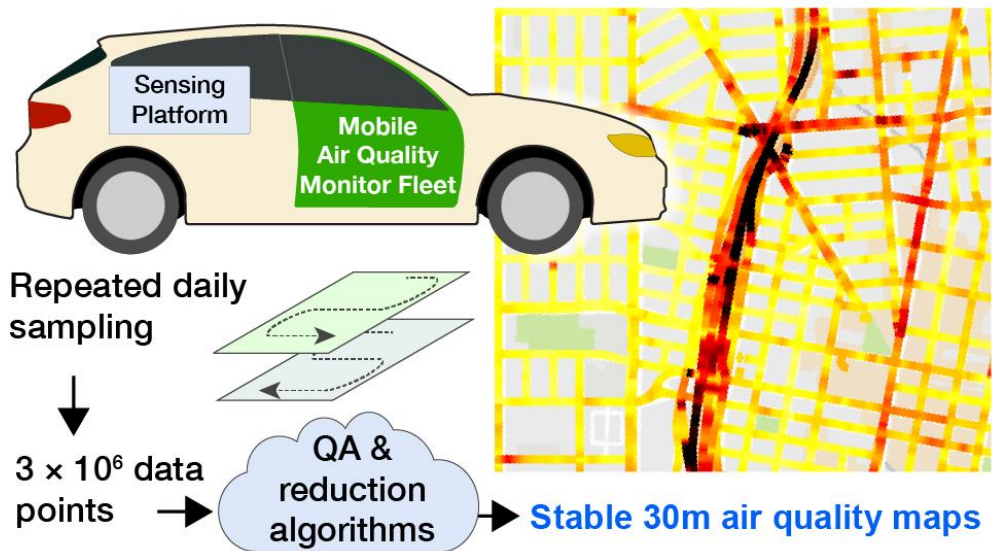
Utrecht Exposome Hub – Citizen Science (public engagement)



Utrecht Exposome Hub – Citizen Science (public engagement)



Utrecht Exposome Hub – Public Private Partnerships



Utrecht Exposome Hub – an endeavor beyond traditional R&D borders



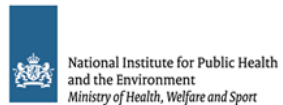
Mobile platform 'Google Air View'



Wearables (E-Health)



Real-time personal radiation dosimeters



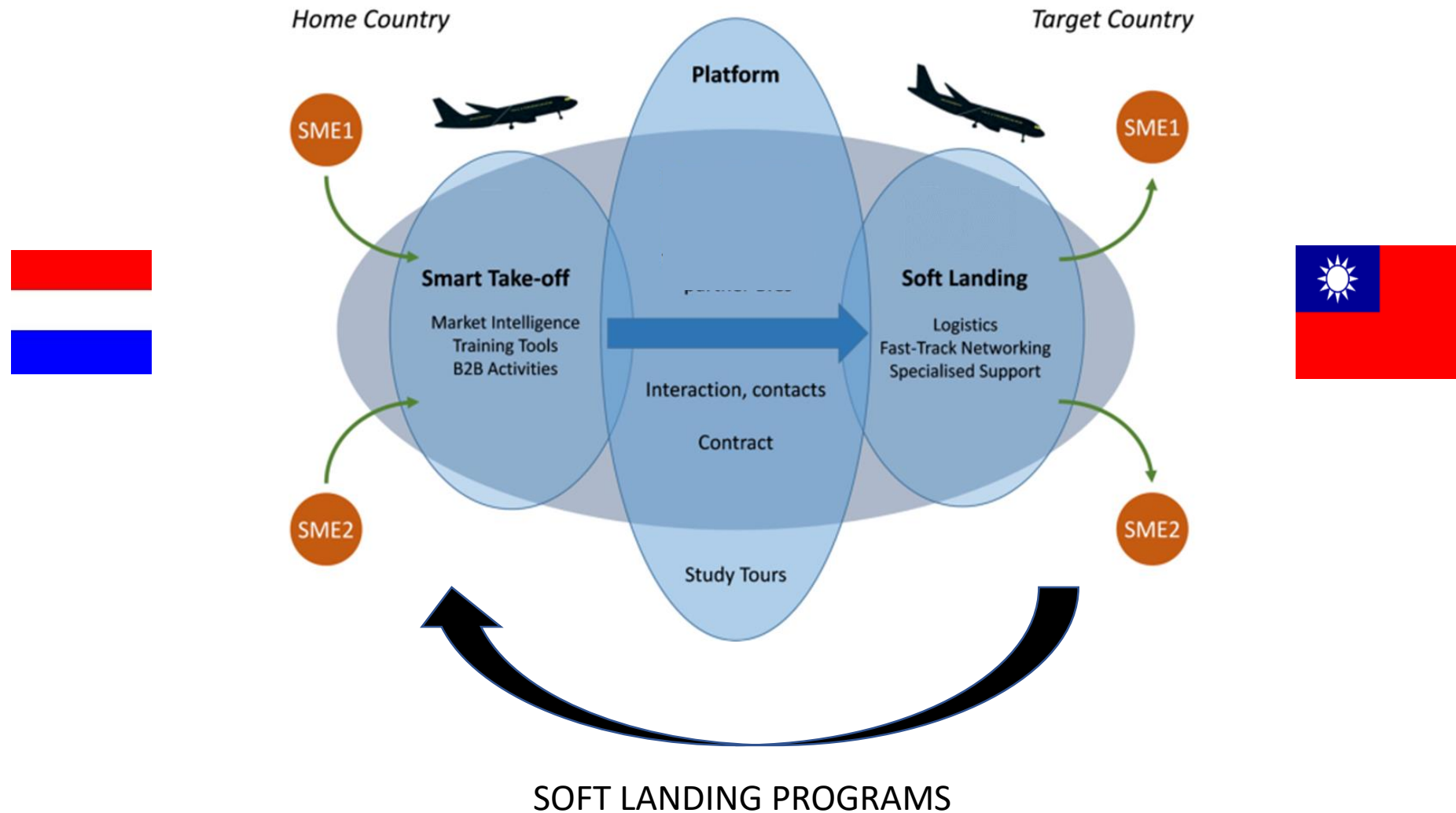
Environment monitoring networks
Citizen Science



Your technology, product, services



Utrecht Exposome Hub – an endeavour beyond traditional R&D borders



UTRECHT SCIENCE PARK

Improving Health
and Quality of Life

Utrecht Region: One of the most competitive regions
of Europe



UTRECHT SCIENCE PARK

- Research
- Education
- Clinical care
- Entrepreneurship

UTRECHT
SCIENCE
PARK



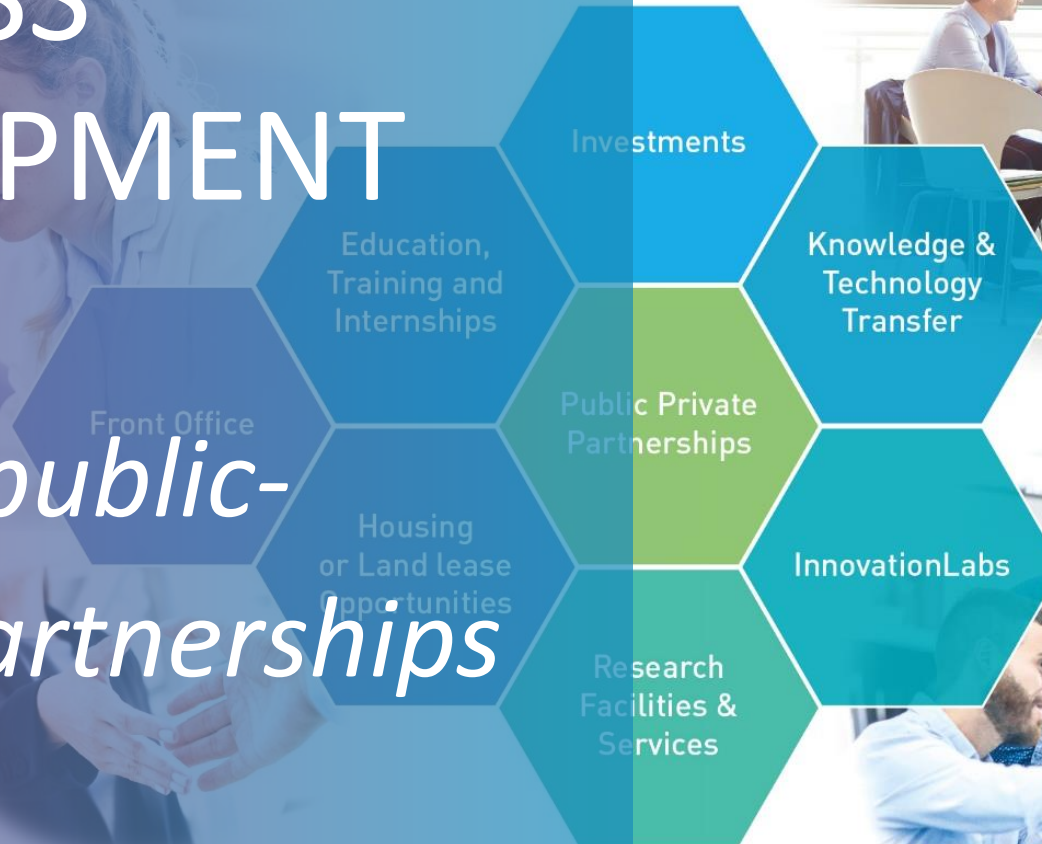
UTRECHT SCIENCE PARK BILTHOVEN

- Development
- Manufacturing

UTRECHT
SCIENCE
PARK
BILTHOVEN

BUSINESS DEVELOPMENT

Through public-private partnerships



Utrecht Region is connecting the dots by using an increasing number of comprehensive (data driven) projects and partnerships, all leading to accurate scenario based interventions for Healthy Urban Living

COME and JOIN US!



UTRECHT REGION



BUSINESS SUPPORT

Seed

Startup

Scale up

Mature

Academic



Talent, Training & Support



Funding & Finance



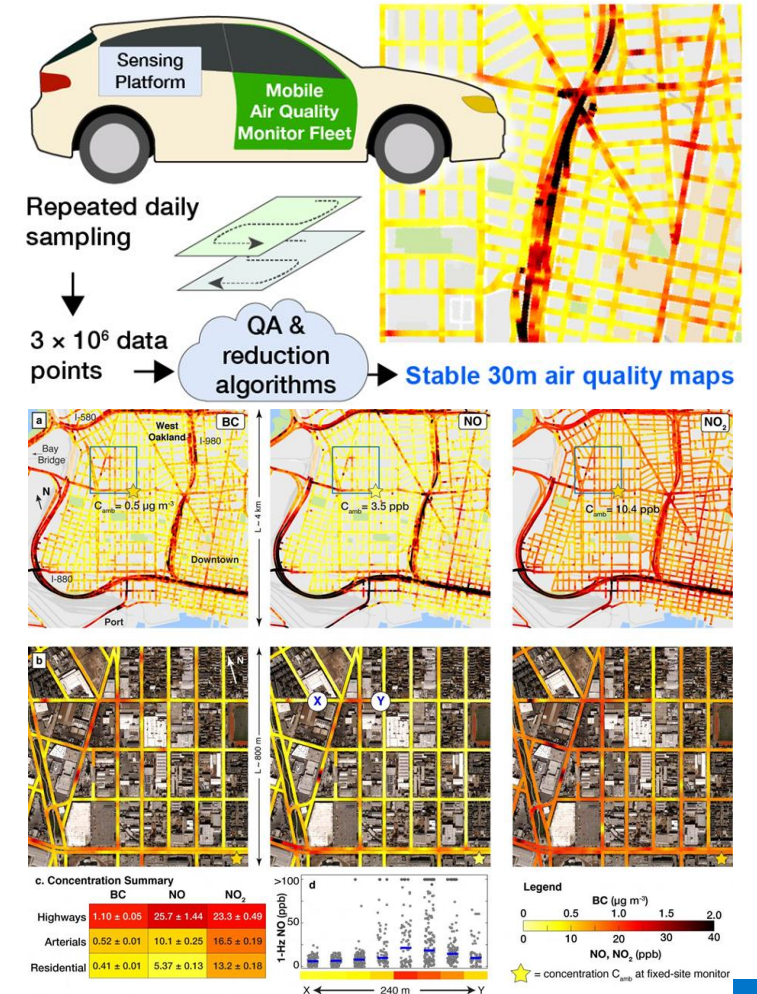
Research Infrastructure & Expertise



Connecting & Market Access



Utrecht Exposome Hub – Public Private Partnerships



'Healthy Urban Living' and the Exposome

