



Info: <https://www.taiwanglobalization.net/?p=12207>

**Taiwan Eye & Vision Care Industry Platform** is a joint effort between Industrial Technology Research Institute (ITRI) and the ophthalmic device industries. The establishment goal is to enhance the value of a product by making it more appropriate for clinical use, through effective lateral communication between the industry and clinicians. In the near future, this platform will assist domestic companies to promote collaboration and branding at an international level, paving the way towards new sales channels in overseas market.



# 2019 Taiwan Ophthalmic Forum - Eyes on the Future

Presenting Innovators

Booth: D125



## Medimaging Integrated Solution Inc.

<http://www.miis.com.tw/>

**Product:** Horus Digital Eye Care Diagnostic Set

**Certification:** CE, FDA, ISO, TFDA

**Feature:**

- Avoid unnecessary mydriatic medications and side effects.
- Improve quality and efficiency of making the rounds and even reach those in remote areas.
- Acquire additional stability with a special adapter attached to slit lamp.



Booth: H116



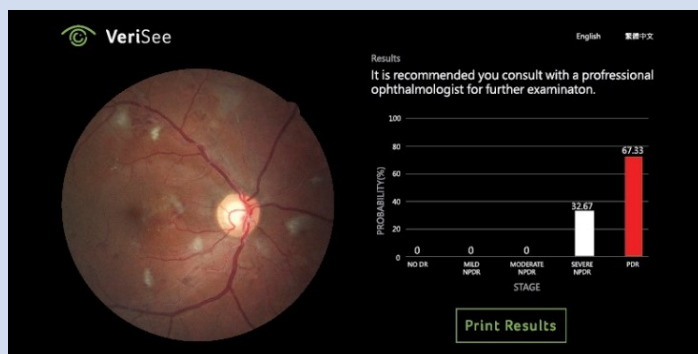
## ACER Being Health

**Product:** VeriSee DR (AI Aided Diagnosis of Diabetic Retinopathy)

**Certification:** applying

**Feature:**

- Reliable performance 89% sensitivity and 90% specificity.
- Less than 40% of the diagnosed population receive fundus examinations for DR.



Booth: D118c



Safetran BioMedical Inc.

<http://www.safetran.com.tw/index.html>

**Product:** Phoenix mini Autologous Bioactive Molecules Enriched System

**Certification:** CE, TFDA, FDA applying

**Feature:**

- New solution for dry eye syndrome and cornea ulcer
- Automatic preparation of consistent autologous Bioactive molecules enrichments
- Closed system
- Precision collection
- Efficiency: total process within 8 minutes.



Booth: D100a



**LIGHTMED CORPORATION**

<https://www.lightmed.com>

**Product:** Combo System with Vitreolysis

**Certification:** FDA, CE

**Feature:**

- Superior Crystal-Q Switch Laser Cavity
- Slitlamp Integrated System
- 5 Step Magnification Changer
- $\pm$  500  $\mu$ m YAG posterior/anterior offset
- Auto Calibration Mode
- Wireless Foot Pedal
- Detachable Remote Panel



**Product:** TruScan Pro

**Certification:** FDA

**Feature:**

- Perform multiple treatments on one platform with 4-wavelengths cutting-edge technology
- Enhance treatment safety and comfort with SP-Mode sub-threshold feature
- Reduce treatment time with industry's fastest pattern-scanning system



**Product:** LIGHTSonic Ultrasound

**Certification:** FDA

A portable diagnostic tool to assist in making a more defined patient treatment plan with real time imaging and High Frame Rate functionality.



Booth: H116



Crystalvue Medical Corporation

<http://www.crystalvue.com.tw/en-global>

**Product:** Fully Automated Non-Mydriatic Retinal Camera

**Certification:** CE, ISO, FDA

**Feature:**

- Fully Automatic image Capture (30s)
- In-System Montage
- Fixation targets are selectable
- With non-mydriatic nature



**Product:** Automatic Non-Contact Tonometer with Pachymeter

**Certification:** CE, ISO

**Feature:**

- Auto 3D Eye-Tracking
- Auto CCT measurement
- Calculation of compensated IOP
- Fully automatic just one touch
- Soft air puff and quick exam time

