

2019 Taiwan Ophthalmic Forum

With the strength of the ICT/optical technology, and great scale of manufacturing capability, Taiwan has been positioned as a strong leader in device product development. Armed with the excellent medical research environment, ophthalmic device manufactures in Taiwan deliver the best opportunity for your future ophthalmic device.

To better understand and take advantage of the coming business opportunity with Taiwan ophthalmology development, Industrial Technology Research Institute (ITRI) will hold the "2019 Taiwan Ophthalmic Forum" to bridge the local manufacturers and product/service providers to international partners and research organizations with the most innovative and state-of-the-art ophthalmic devices.

You are cordially invited to attend this great event and jump into the fast growing ophthalmic industry with the latest technology at your hands.

- Date / Time: Sep. 16, 2019 16:00~19:00
- Venue: Hotel Mercure Paris Porte de Versailles Expo.
Meeting Room: Elysées 3
- Agenda:

Time	Event	Speaker
16:00~16:30	Registration	
16:30~16:35	Opening	
16:35~17:00	Ophthalmology medical device in Taiwan	Pierce Lin/Chairman Universal Ophthalmology Group Company
17:00~18:00	Products introduction : 1. Crystalvue Medical Corporation <ul style="list-style-type: none">■ Fully Automated Non-Mydriatic Retinal Camera■ Automatic Non-Contact Tonometer with	William Wang / CEO

	Pachymeter	
	2. Medimaging Integrated Solution Inc. (MiiS)	
	<ul style="list-style-type: none"> ■ Horus Scope™ Total Eye Care Solution ■ AI DR Screening Solution 	Stefan Cheng / CEO
	3. ACER Incorporated	
	<ul style="list-style-type: none"> ■ AI Aided Diagnosis of Diabetic Retinopathy 	YH Hsu / Associate Vice President
	4. Safetran BioMedical Inc.	
	<ul style="list-style-type: none"> ■ Rhea Autologous Bioactive Molecules Enrich System 	Sabina Juan / Marketing Specialist
	5. LIGHTMED Corporation	
	<ul style="list-style-type: none"> ■ Ophthalmic Laser Equipment 	Sera Liao / Sales Coordinator
18:00~19:00	Networking	

Contact window

- Taiwan Globalization Network (TGN)
Valerie Hsu E-mail: agn@taiwanglobalization.net
valeriehsu_nl@yahoo.com
- Industrial Technology Research Institute (ITRI)
Ian Chien E-mail: ianchien@itri.org.tw

Supervised by: Industrial Development Bureau, Ministry of Economic Affairs



Organized by: Industrial Technology Research Institute (ITRI)



Co-organized by: Taiwan Globalization Network (TGN)

Hotel location

Mercure Paris Porte de Versailles Expo

36-38 rue du Moulin - 92170 Vanves (Paris) - France

Phone : 0033 1 46 48 55 10

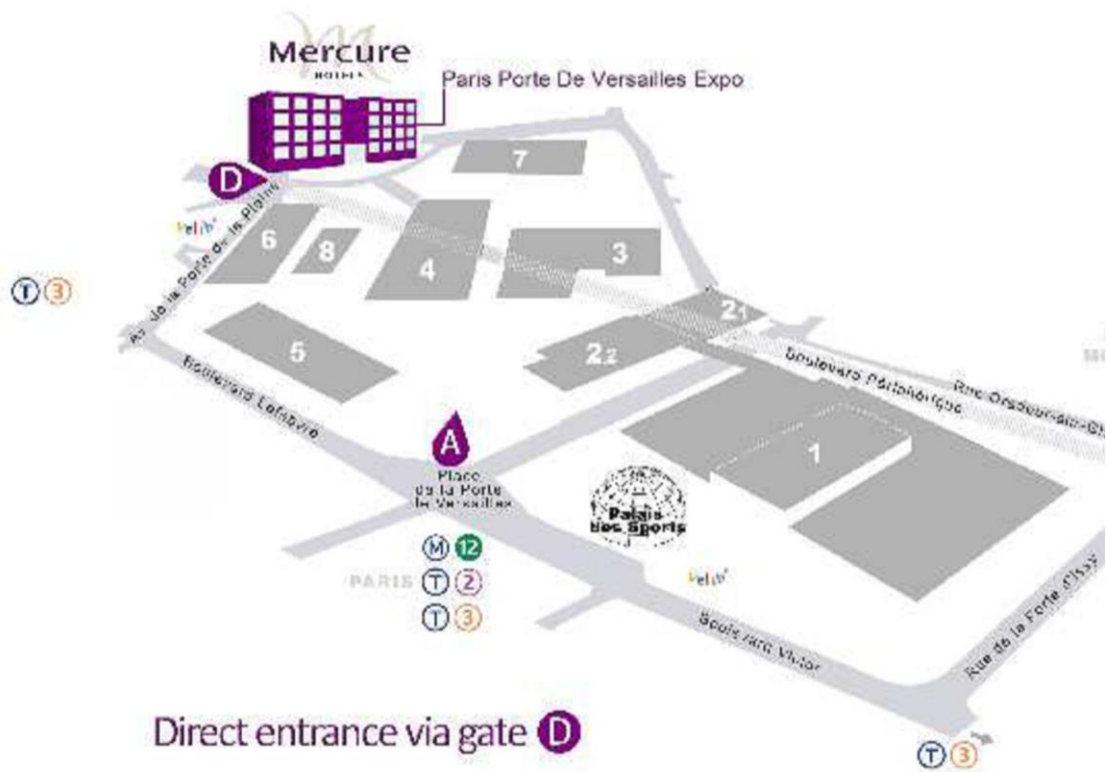


Easy Access

- Line 12 metro station **Porte de Versailles**

- Tram 3 station **Georges Brassens**

Access Montparnasse Train station (3km), Paris Orly airport (15km) et Paris Roissy CDG airport (35km)



Product introduction:

Booth: H116



Crystalvue Medical Corporation

<http://www.crystalvue.com.tw/en-global>

Product: Fully Automated Non-Mydriatic Retinal Camera

Certification: CE, ISO, FDA

Feature:

- Fully Automatic image Capture
- In-System Montage
- Fixation targets are selectable
- With non-mydriatic nature



Product: Automatic Non-Contact Tonometer with Pachymeter

Certification: CE, ISO

Feature:

- Auto 3D Eye-Tracking
- Auto CCT measurement
- Calculation of compensated IOP
- Fully automatic just one touch
- Soft air puff and quick exam time



Booth: D125



Medimaging Integrated Solution Inc.

<http://www.miis.com.tw/>

Product: Horus Digital Eye Care Diagnostic Set

Certification: CE, FDA, ISO, TFDA

Feature:

- Avoid unnecessary mydriatic medications and side effects.
- Improve quality and efficiency of making the rounds and even reach those in remote areas.
- Acquire additional stability with a special adapter attached to slit lamp.



Booth: H116



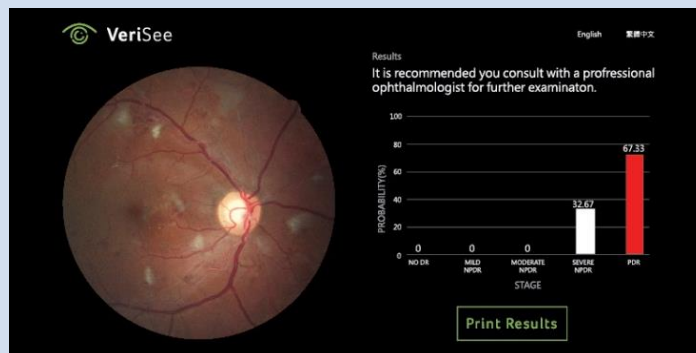
ACER Incorporated

Product: VeriSee DR (AI Aided Diagnosis of Diabetic Retinopathy)

Certification: applying

Feature:

- Reliable performance 89% sensitivity and 90% specificity.
- Less than 40% of the diagnosed population receive fundus examinations for DR.



Booth: D118c



Safetran BioMedical Inc.

<http://www.safetran.com.tw/index.html>

Product: Rhea Autologous Bioactive Molecules Enrich System

Certification: CE, TFDA, FDA applying

Feature:

- New solution for dry eye syndrome and cornea ulcer
- Automatic preparation of consistent autologous Bioactive molecules enrichments
- Closed system
- Precision collection
- Efficiency: total process within 8 minutes.



Booth: D100a



LIGHTMED Corporation

<http://www.lightmed.com/>

Product: YAG/SLT/577 Combo System with Vitreolysis

Certification: FDA, CE

Feature:

- Superior Crystal-Q Switch Laser Cavity
- Slitlamp Integrated System
- 5 Step Magnification Changer
- $\pm 500 \mu\text{m}$ YAG posterior/anterior offset
- Auto Calibration Mode
- Wireless Foot Pedal
- Detachable Remote Panel



ESCRS Exhibitors Map

<https://www.es CRS.org/>



H116

- Crystalvue Medical Corporation
- ACER Incorporated

D118c

- Safetran BioMedical Inc.

D125

- Medimaging Integrated Solution Inc. (MiiS)

D100a

- LIGHTMED Corporation

Taiwan Eye & Vision Care Industry Platform is a joint effort between

Industrial Technology Research Institute (ITRI) and the ophthalmic device industries. The establishment goal is to enhance the value of a product by making it more appropriate for clinical use, through effective lateral communication between the industry and clinicians. In the near future, this platform will assist domestic companies to promote collaboration and branding at an international level, paving the way towards new sales channels in overseas market.

